

TA7222AP

T-74-05-01

## 5.8W AUDIO POWER AMPLIFIER

## CAR STEREO CAR RADIO AUDIO OUTPUT

- Very Few External Parts (Require 4 PCS Capacitor)
- Adjustable Closed-Loop Gain
- High Sustaining Over Voltage  
(Surge voltage up to 40V for 0.2sec. pin 1 to 8)
- Excellent Ripple Rejection
- High Power and Low Distortion :  
 $P_{OUT}=5.8W(\text{Typ.})$  at  $V_{CC}=13.2V$ ,  $R_L=4\Omega$ ,  $THD=10\%$ ,  
 $THD=0.2\%(\text{Typ.})$
- Possible to Use for  $2\Omega$  Load :  
 $P_{OUT}=9.3W(\text{Typ.})$  at  $V_{CC}=13.2V$ ,  $THD=10\%$
- Operating Supply Voltage Range :  $V_{CC}=8\sim 18V$
- Audio Muting Circuit
- Protection Circuit (for Load Short, Excessive  
Supply Voltage and Thermal Shut-down)

## MAXIMUM RATINGS (Ta=25°C)

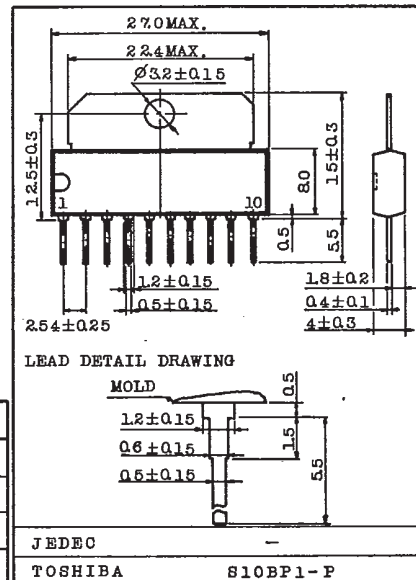
CHARACTERISTIC	SYMBOL	RATING	UNIT
Peak Supply Voltage (200ms)	VCC surge	40	V
D.C Supply Voltage	VCC(DC)	25	V
Operating Supply Voltage	VCC(ope)	18	V
Output Current (Peak)	IO(peak)	4.5	A
Power Dissipation (Tc=25°C)	Pd	12.5	W
Operating Temperature	Popr	-30 ~ 75	°C
Storage Temperature	Tstg	-55 ~ 150	°C

## ELECTRICAL CHARACTERISTICS

(Unless otherwise specified,  $V_{CC}=12.5V$ ,  $R_L=4\Omega$ ,  $R_g=600\Omega$ ,  $f=1kHz$ ,  $T_a=25^\circ C$ )

CHARACTERISTIC	SYMBOL	TEST CIRCUIT	TEST CONDITION	MIN.	TYP.	MAX.	UNIT
Quiescent Current	ICCQ	-	-	-	40	80	mA
			$V_{CC}=18V$	-	45	100	
Output Power	POUT	-	THD=10%	-	5.2	-	W
			$V_{CC}=13.2V$ , THD=10%	5.0	5.8	-	
			$V_{CC}=13.2V$ , $R_L=2\Omega$ , THD=10%	-	9.3	-	
Maximum Output Power	POM	-	$V_{CC}=13.2V$ , $V_{IN}=100mV$	-	9.0	-	W
Total Harmonic Distortion	THD	-	$P_{OUT}=1W$	-	0.2	1.5	%
			$P_{OUT}=100mW$	-	0.36	1.0	
			$P_{OUT}=1W$ , $R_L=2\Omega$	-	0.5	-	
Voltage Gain	Gv	-	-	51.5	53	54.5	dB
Input Resistance	RIN	-	-	-	34	-	kΩ
Output Noise Voltage	VNO	-	$R_g=10k\Omega$ , BW=50~20kHz	-	0.9	2.0	mV

Unit in mm



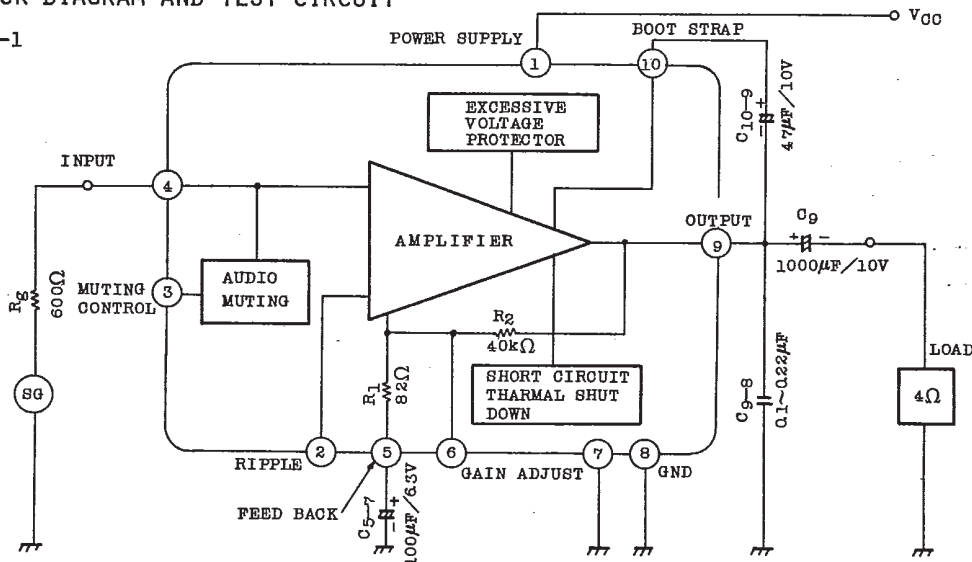
AUDIO LINEAR IC

## TA7222AP

T-74-05-01

## BLOCK DIAGRAM AND TEST CIRCUIT

FIG-1



1. Terminal ⑦ is input stage GND, terminal ⑧ is output stage GND.
  2. Closed-loop voltage gain of the amplifier is determined by the ratio ;  $(R_1+R_2)/R_1$ . TA7222AP is fixed at typically 53.0 dB for designing minimum external components.
    - When higher closed loop gain is desired, the gain can be increased by connecting a resistor between pin ⑤ and pin ⑥ . Open loop gain is obtained by shortening pin ⑤ and pin ⑥ .
    - When lower closed loop gain is desired, the following two ways can be used.
      - A. Series connecting a resistor and a capacitor between pin ⑥ and pin ⑨ .
      - B. Series adding a resistor to pin ⑤.
- Both A and B, lower closed loop gain than 40 dB is not recommended. And also, ripple rejection ratio is decreased by using B configuration in such a case, connecting a capacitor from pin ② to ground is recommended.  
(Fig.2,3,4 show these ways.)
3. For applications requiring high ripple rejection ratio, an excellent supply voltage ripple rejection is obtained by connecting a capacitor (recommended value 4.7μF) between pin ② and ground.  
(R.R-f shows these characteristics)
  4. Terminal ③ is Audio Muting Control Input.
    - When control input is low state (; open or below 0.3V), muting circuit does not operate, OFF.
    - When control input is high state (; above 1.0V), muting circuit, then, operates, ON. (Refer to Fig.5)

# TA7222AP

T-74-05-01

## APPLICATION CIRCUIT

HIGHER CLOSED LOOP GAIN CIRCUIT

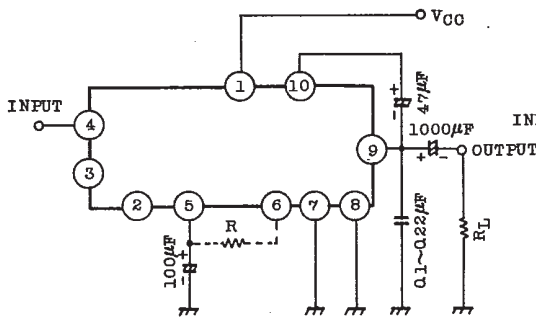


FIG-2

LOWER CLOSED LOOP GAIN CIRCUIT (A)

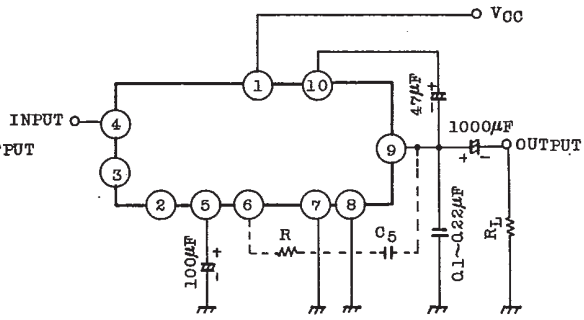
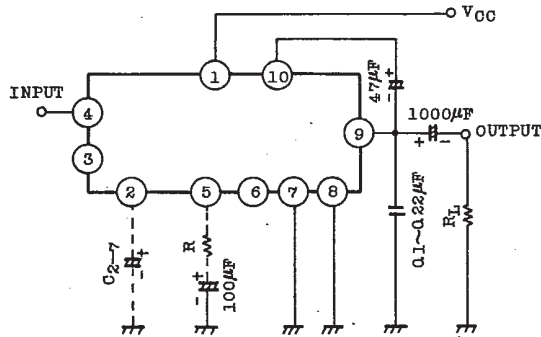


FIG-3

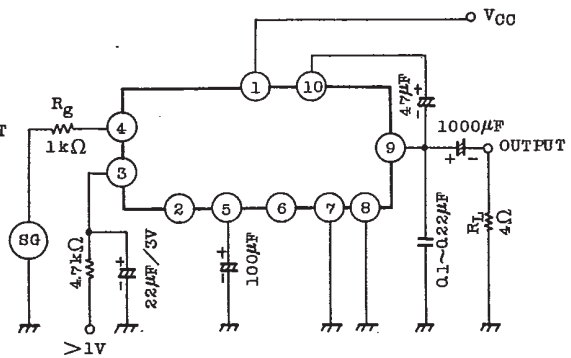
LOWER CLOSED LOOP GAIN CIRCUIT (B)



Note : Capacitor C2-7 must be used when high ripple rejection ratio is requested.

FIG-4

AUDIO MUTING CIRCUIT



Note : Power output reduction level  
 -40dB at  $R_g=1k\Omega$   
 -35dB at  $R_g=0$

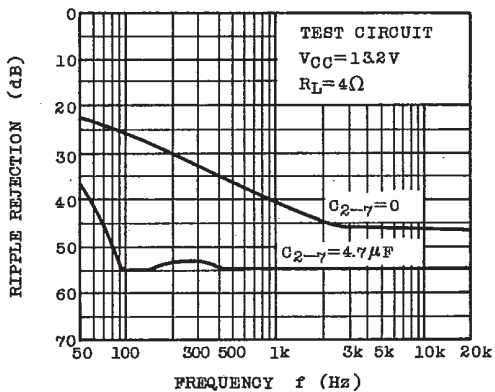
FIG-5

AUDIO LINEAR IC

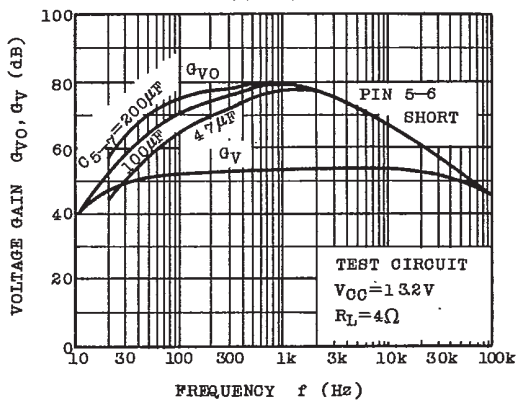
# TA7222AP

T-74-05-01

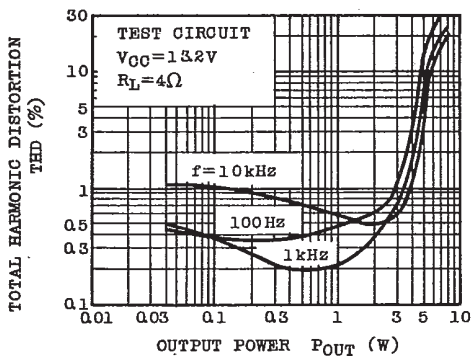
RIPPLE REJECTION - f



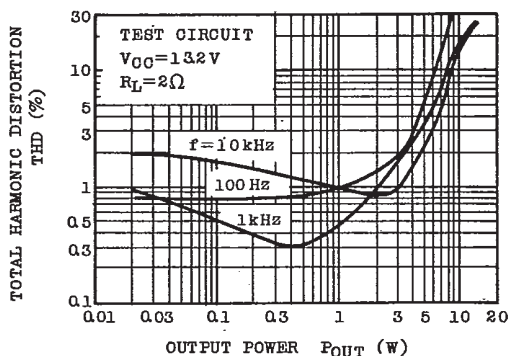
$G_{VO}, G_V - f$



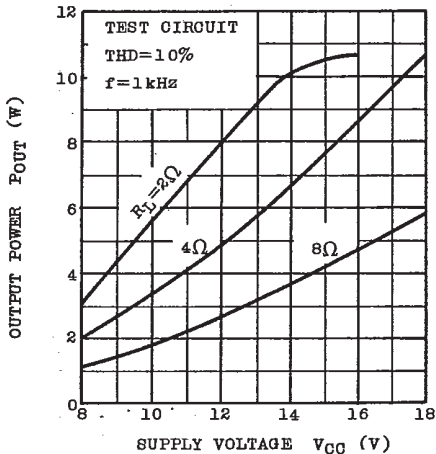
THD - POUT



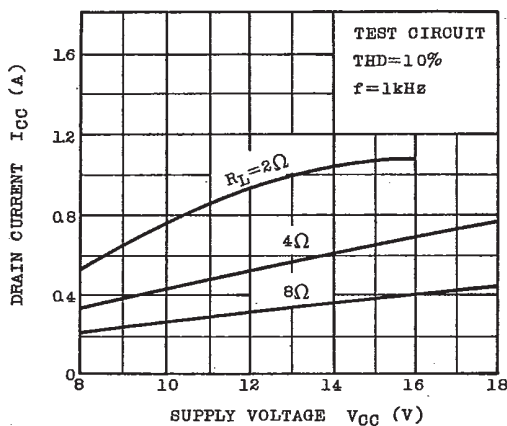
THD - POUT



$P_{OUT} - V_{CC}$

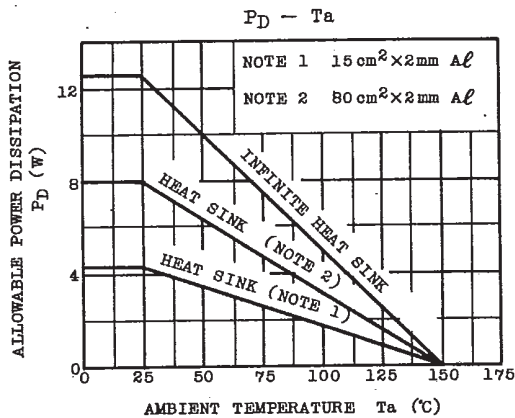
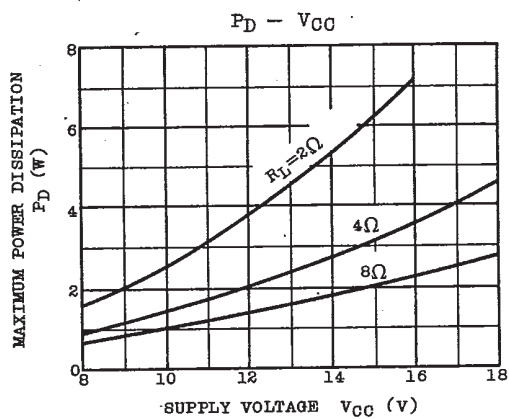


$I_{CC} - V_{CC}$



# TA7222AP

T-74-05-01



AUDIO LINEAR IC